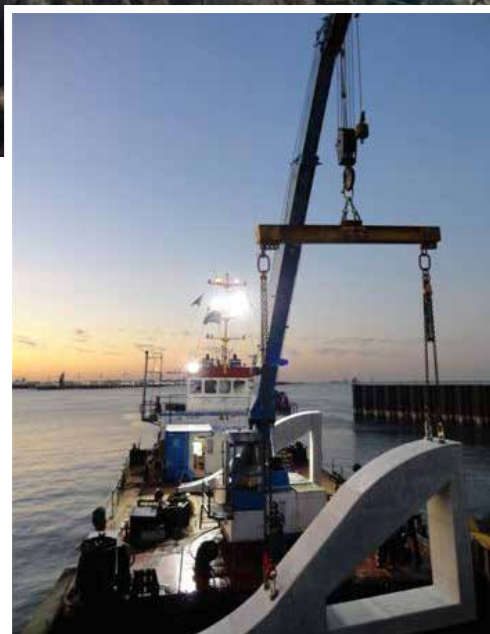


FFS AMON

Multipurpose Crane Vessel
Towage and harbour work



Installation of 25 tonnes breakwater structures.



Farsund Fortøyningsselskap AS

Office ph.: +47 38 39 12 29

Mail: mail@ffs-as.com - chartering@ffs-as.com

Visit: Strandgaten 16, Farsund, Norway

Postal: P.B 126, NO-4552 Farsund

www.ffa-as.com

Towage and harbour work

Multipurpose Crane Vessel

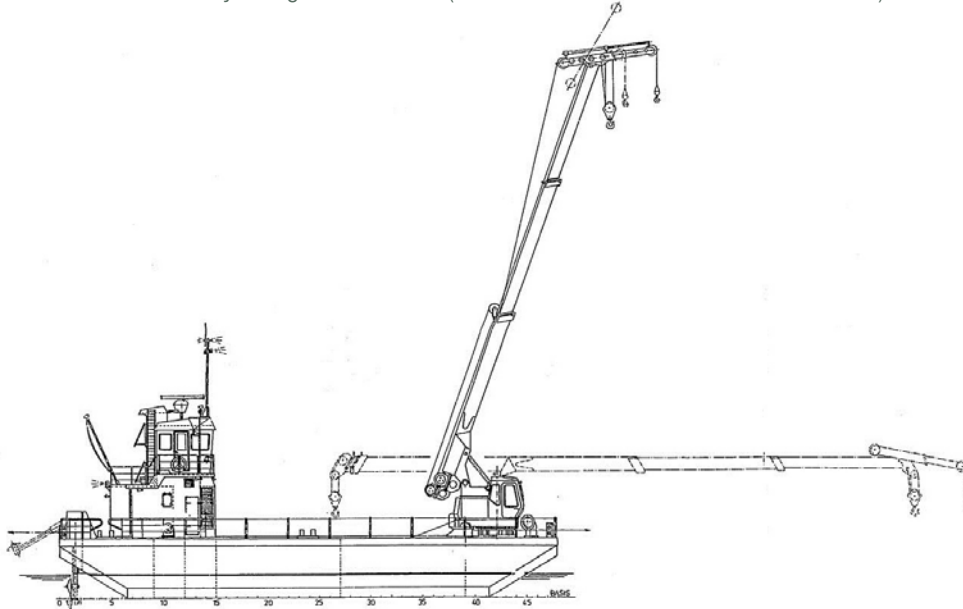
FFS AMON

IMO No. 8829397 Call sign LLIB MMSI No 257216000

Tel. +47 913 99 271 e-mail amon@ffs-as.com

Port of registry FARSUND Flag NOR

Class. Lloyds register +100A1 (North and Baltic sea trade within A1 area)



Dimensions.	Loa 23,97m Beam 11,5m Draft 1,4m Gt 213	Salvage	Fixed Salvage pump 1500 m3 + electrical driven transportable Pumps
Aux engines	3xDetroit V8-71 with Stamford generator 175 KVA each 380 V 50 HZ 1x perkins silentpack harbour set 20 KVA	Accomm:	Total 4 beds, Gally, and messroom. Additional container for clients can be put on deck.
Propulsion	2 X 120 KW hydraulic 360 degree rudder-propeller fully retractable	Bridge.	Communication equipment according to Gmdss A1 Area Wheelhouse with all modern navigation aid including Arpa radar and Ecdis
Speed	Max /service 6/5 kn	Others.	Workshop 65 m2 below main deck with hatch to deck 3x4 meter Transport of heavy equipment, Containers, Rig chain, Excavators etc. Shallow draft. Cable laying, Dive support, Wind farm work, Salvage etc.
Consumption	Service speed 2 t/d stationary incl. crane service 1, t/d		
Capacities.	Free deck space 11,5 x 10,5 5 tm2 Fo/Lo 11m3 / 1m3 Fw/Bw 2m3 / 100m3		
Deck	Crane.Max lift 40 tonnes, total reach 21,4 meter 4 point mooring system including 4 x 6 tonnes winches operated from bridge, 4 anchors 2 x anchor winch fore and aft. 2 x spud legs x 12 meter operated from bridge. (Optional) Burning and welding gears. Rescue pick-up boat with outboard engine and nav sys. Ramp 20 T axle load (Optional) Moonpool ø 600		

Details believed correct but without guarantee, all info given subject to changes.



Farsund Fortøyningsselskap AS

Office ph.: +47 38 39 12 29

Mail: mail@ffs-as.com - chartering@ffs-as.com

Visit: Strandgaten 16, Farsund, Norway

Postal: P.B 126, NO-4552 Farsund

www.ffa-as.com