

# FFS ARION

AHT ASD ESCORT and Deepsea salvage Tug.



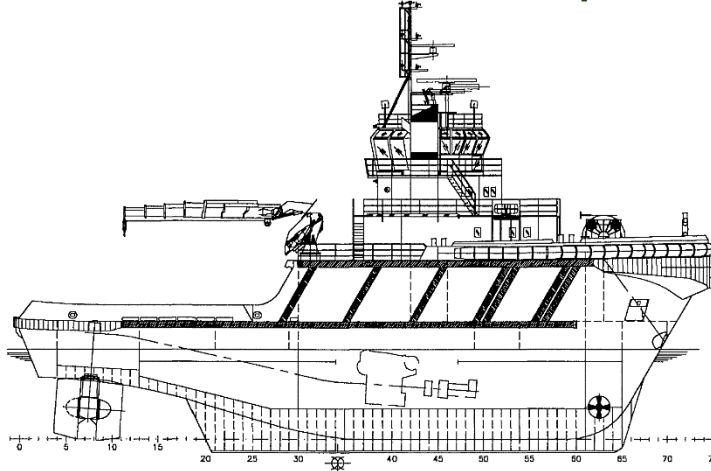
## Response – Solutions – Quality

We respond, we seek solutions, we deliver quality.

## Towing – Mooring – Salvage

# FFS ARION

## AHT ASD ESCORT and Deepsea Salvage TUG



DNV Class Notation + 1A1 Escort(N(99,-10),(78,8)) FiFi(I) Tug E0 OILREC SF

### General

Type of vessel	TUG Deep sea/Salvage
Trading area	Unrestricted
Year built	1993
Flag state	Cyp
Port of registry	Limassol
IMO Number	9056789
Radio Call Sign	5BQL4
MMSI	

### Engines

2x Wartsila Wickman	8V28B, 2647 KW Each
Props.	Azimuth US 120/85-320 Pitch propellers
Bow Thruster	Brunvoll 600 HP

### Capacities

Speed. Max/Eco	14/9 knots
Consumption	20/9
Bollard Pull Cont	87 T
Steering power @ 10kn	100T
Endurance eco spd	70 days
Clear deck space	150 m <sup>2</sup>

### Deck

Crane Palfinger PK 7500 M	4,2 T @ 14,2m
Oilboom	300 m
Aft Winch double Drum	300T Br 175T Pull
Drum 1 Towing Drum	1000 m 64 mm
Drum 2 AH Drum	1000 m 64mm
Bow Winch double drum	300T Br130T Pull
Storage drum	3m ø2,2
Tugger Winch	15 T
Stern Roller	200T 3,5x1,5 m
Fork	300T Karmoy Max 102mm
Towing Pins	160T Karmoy

\*Normally carrying a wide specter of salvage equipment such as electrical and diesel driven salvage pumps welding and cutting equipment, etc. Salvage equipment is FFS pool equipment.  
Details subject to change without warning.

### Dimensions

Length o.a	45,5m
Beam Extreme	14,6m
Depth to main deck	7,6m
Max Draught	7,0 m
Air draft	24,0m
Gross tonnage	1229
Deck Area	180m <sup>2</sup>

### Tank Capacities

Fuel/oil	420 m <sup>3</sup> +280 m <sup>3</sup> ORO
Fresh water	52m <sup>3</sup>
Oil Recovery	500 m <sup>3</sup>

### Accommodation

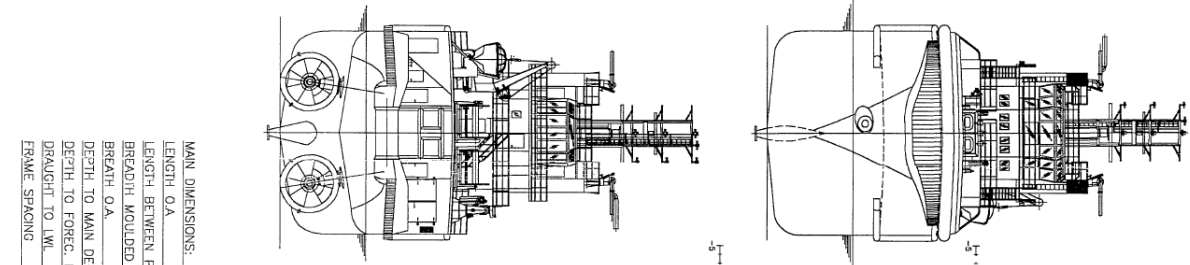
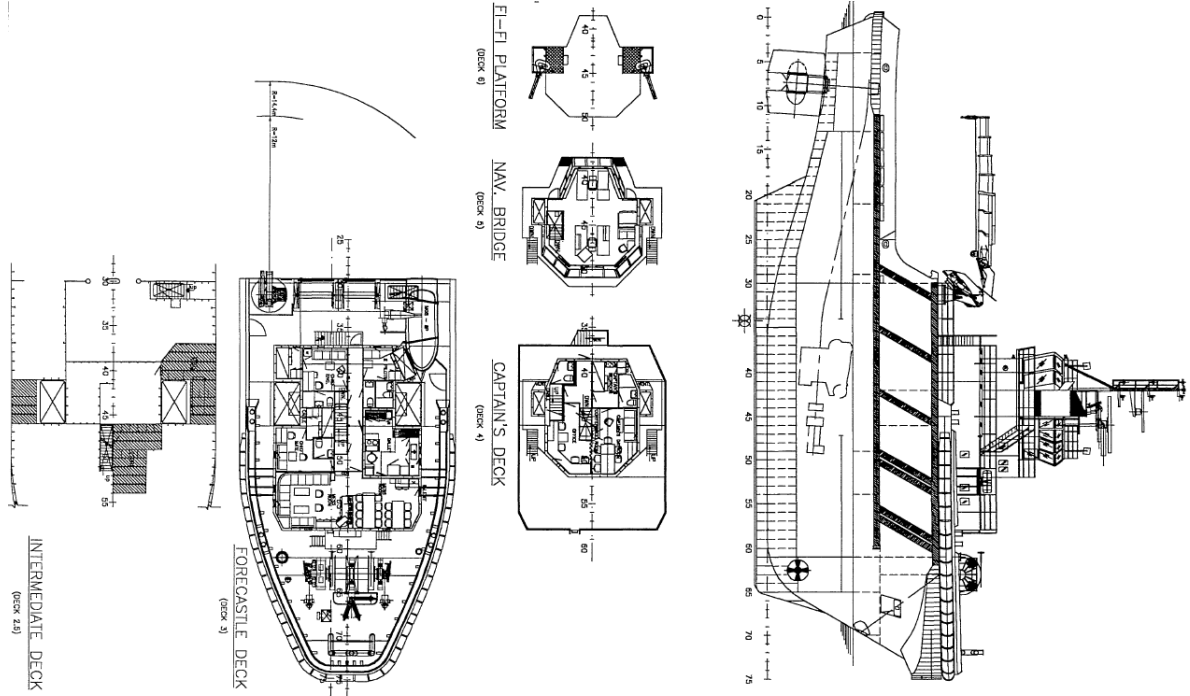
Fully airconditioned	
Single cabins	4 for 4 crew
Double cabins	6 for12 crew
Ship office	1
Total beds	16
Garage for ROV and ORO equipment	

### Other

FiFi 1, Waterspray and foam  
Workboat  
Yokohama fenders\*  
Salvage Pumps\*

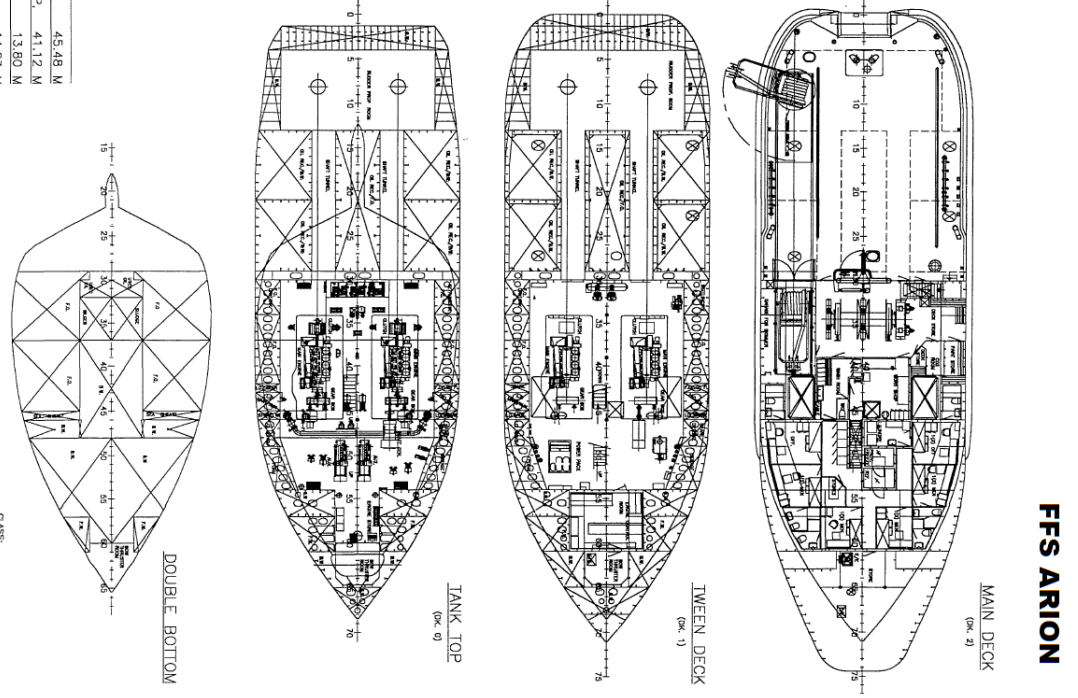
### Bridge

Communication equipment for A1+A2+A3  
All modern navigation equipment according to class



MAIN DIMENSIONS:

LENGTH O.A.	45.48 M
LENGTH BETWEEN P.P.	41.12 M
BREADTH MOLDED	13.80 M
BREADTH O.A.	14.63 M
DEPTH TO MAIN DECK	7.60 M
DEPTH TO FOREC. DECK	11.50 M
DRAUGHT TO LWL	5.80 M
FRAME SPACING	600 MM



**FFS ARION**