

FFS AMON

Self propelled Crane vessel



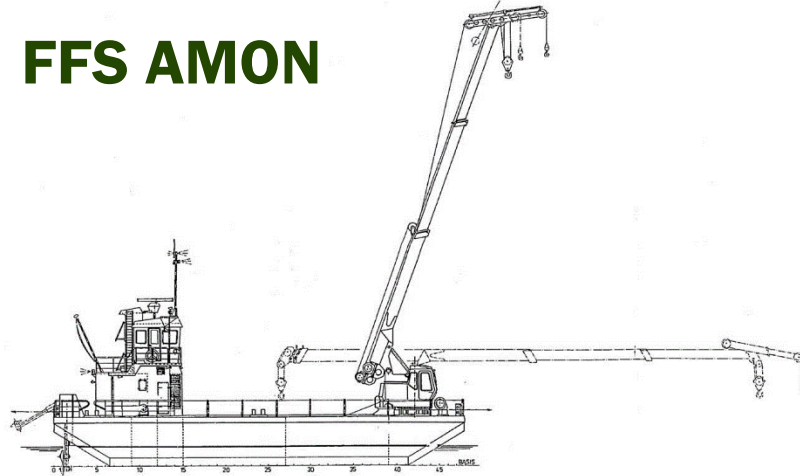
Response – Solutions – Quality

We respond, we seek solutions, we deliver quality.

Towing – Mooring – Salvage

Self propelled crane and work barge

FFS AMON



LR Class Notation.

General

Type of vessel	Crane vessel Self propelled
Trading area	North & Baltic Sea A1 area
Year built	1982
Flag state	NOR
Port of registry	FARSUND
IMO Number	8829397
Radio Call Sign	LLIB
MMSI	257216000

Engines

2x Nogva Scania DI13 420 KW IMO Tier II
 1x Nogva John Deer 90 KW genset
 Props. 2 x HRP 120 KW
 Bow Thruster 50 KW

Capacities

Speed. Max/Eco	6 knots
Consumption	1,5 tonnes
Bollard Pull Cont	N/A
Endurance eco spd	7 days

Deck

Crane	40T @ 3,75m 4T @ 21m
Anchor winches	frw/aft
Tugger Winch	3,75 T
Mooring winches/Four point	4 x 6T
Deck Cargo	50T
Deck space	10x11,5 Meter
Moonpool	ø 60 cm Hatch cover
A-Frame	30T + 15 T Winch
Spud leg	12 meter
Salvage Pump	1500 m3/hr
Aux Powersupply	400V 250 Ah

Normally carrying a wide specter of salvage equipment
 Such as electrical and diesel driven salvage pumps welding
 and cutting equipment, etc.
 Details subject to change without warning.

Dimensions

Length o.a	23,9m
Beam Extreme	11,5m
Depth to main deck	2,85m
Max Draught	2,0 m
Gross tonnage	213

Tank Capacities

Fuel/oil	11m ³
Fresh water	2m ³
Freshwater/ballast	200 m ³

Accommodation

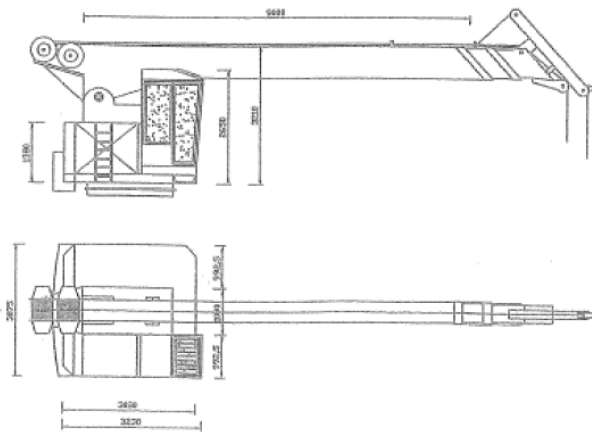
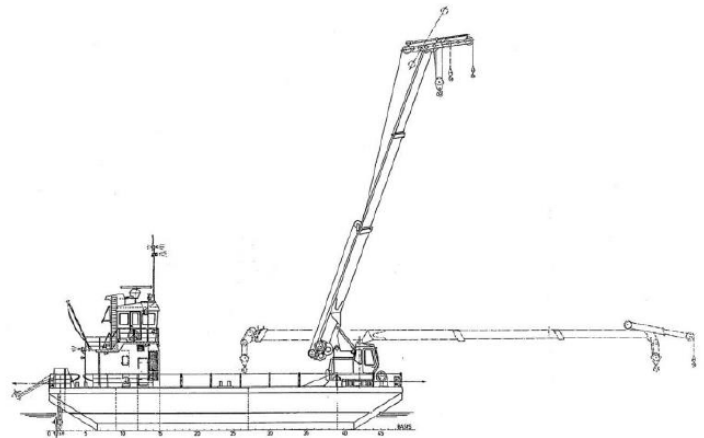
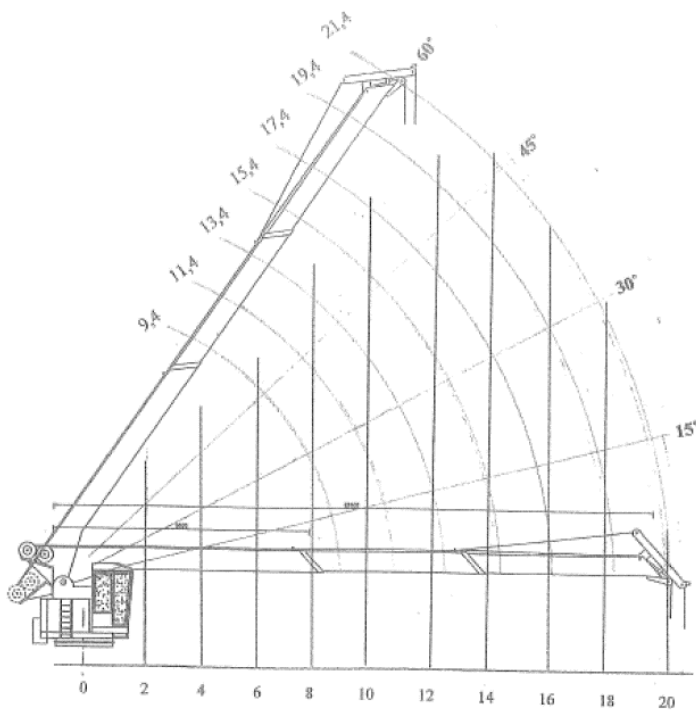
Four men Cabin	1 for 4
Total beds	4
Workshop	65m ²

Other

Workboats
 Yokohama fenders

Bridge

Communication equipment for A1
 All modern navigation equipment according
 to class



Load chart 40 T Kenz West Crane FFS AMON

Radius (m)	Arm Length						
	9,4	11,4	13,4	15,4	17,4	19,4	21,4
2	40	20	20	16	14	12	10
3	40	20	20	16	14	12	10
3,75	40	20	20	16	14	12	10
4	36,9	20	20	16	14	12	10
5	30	20	20	14,9	13,4	11,8	10
6	24,2	20	17	13,8	12,7	11,3	9,3
7	20	16,9	15,1	12,6	11,8	10,6	8,5
8	16,8	14,8	13,5	11,3	10,7	9,8	7,5
9		13,2	12,1	10,1	9,6	8,9	6,9
10		11,8	10,7	9,3	8,5	7,8	6,4
11			9,5	8,5	7,6	6,5	5,9
12			8,4	7,8	6,8	6	5,5
13				7,2	6,2	5,6	5,1
14				6	5,8	5,3	4,9
15					5,6	5	4,8
16					5	4,8	4,6
17						4,6	4,5
18						4,5	4,3
19							4,2
20							4