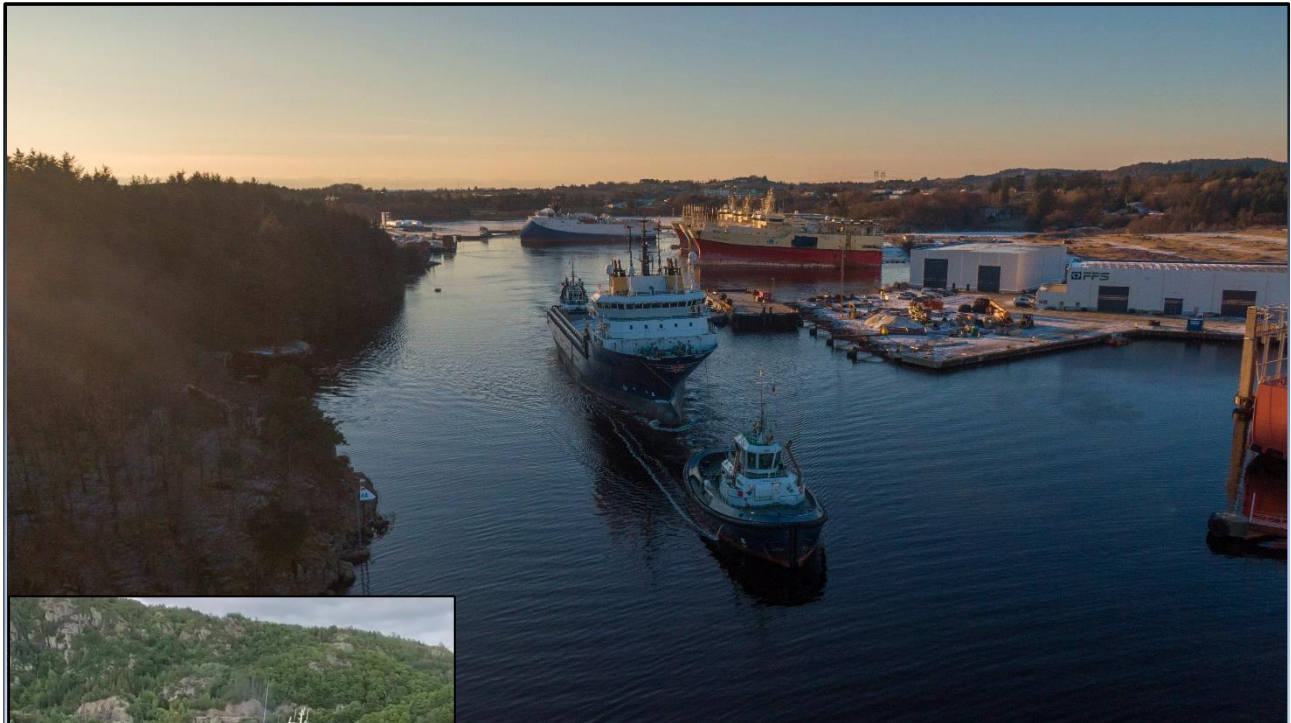


# FFS ATHOS

## Hybrid Propulsion Tractor Tug



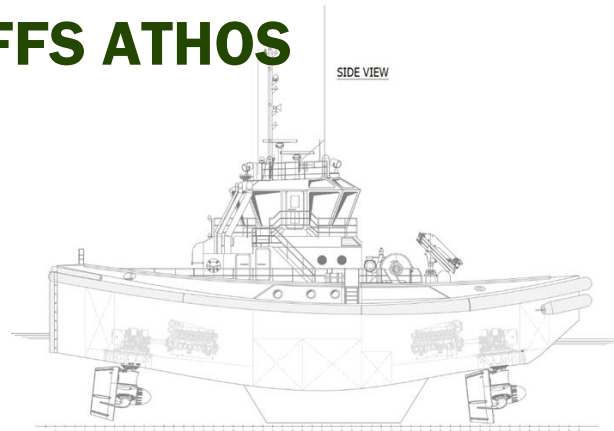
### Response – Solutions – Quality

We respond, we seek solutions, we deliver quality

### Towing – Mooring – Salvage

## EDDY TUG

# FFS ATHOS



BV Class Notation + Tugboat I Escort tug, Unrestricted Nav Aut-UMS

### **General**

Type of vessel	TUG Deep sea/Harbor
Trading area	Unrestricted
Year built	2014
Passengers	12 plus crew
Flag state	NOR
Port of registry	FARSUND
IMO Number	9714575
Radio Call Sign	LGES
MMSI	257090730

### **Engines**

2x Mitsubishi S16R2-T2MPTAW IMO Tier II  
1600 KW  
2X Scania DI 16-075M 750 KW  
Hybrid Propulsion.  
Diesel direct and Diesel Electric  
Props. Schottel azimuth

### **Capacities**

Speed. Max/Eco	14/9 knots
Consumption	12/4 tonnes
Bollard Pull Cont	65 T
Endurance eco spd	23 days
Crane Max lift	3,1 T @ 4,97m
Aft Winch double drum	1750 KN Brake
Drum 1 Steelwire	650 meter 52 mm
Drum 2 Escort line	200 m Strongline
Towing Hook	N/A
Bow Winch	Capstan 5 T
Tugger Winch	N/A

Normally carrying a wide specter of salvage equipment  
Such as electrical and diesel driven salvage pumps welding  
and cutting equipment, etc.  
Details subject to change without warning.

### **Dimensions**

Length o.a	30,3m
Beam Extreme	13,46m
Depth to maindeck	6,65m
Max Draught	4,75 m
Gross tonnage	399

### **Tank Capabilities**

Fuel/oil	110m <sup>3</sup>
Fresh water	58m <sup>3</sup>

### **Accommodation**

Fully airconditioned  
All crew cabins fitted with WC and shower  
Single cabins 3 for 3 crew  
Double cabins 2 for 4 crew  
Total beds 7

### **FIFI**

N/A

### **Bridge**

Communication equipment for A1+A2+A3  
All modern navigation equipment according  
to class

