

# FFS AMON

Self propelled Crane vessel



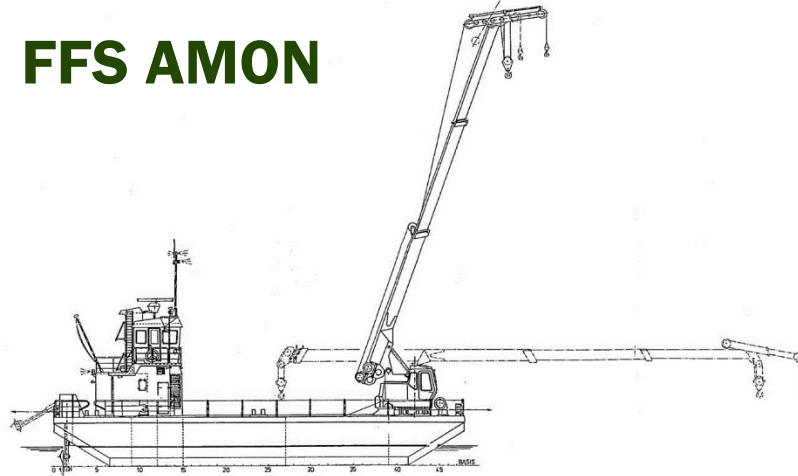
## Response – Solutions – Quality

We respond, we seek solutions, we deliver quality.

## Towing – Mooring – Salvage

## Self propelled crane and work barge

# FFS AMON



DNV Class Notation.

### **General**

Type of vessel	Crane vessel Self propelled
Trading area	North & Baltic Sea A1 area
Year built	1982
Flag state	NOR
Port of registry	FARSUND
IMO Number	8829397
Radio Call Sign	LLIB
MMSI	257216000

### **Engines**

2x Nogva Scania DI13 420 KW IMO Tier II  
 1x Nogva John Deer 90 KW genset  
 Props. 2 x HRP 120 KW  
 Bow Thruster 50 KW

### **Capacities**

Speed. Max/Eco	6 knots
Consumption	1,5 tonnes
Bollard Pull Cont	N/A
Endurance eco spd	7 days

### **Deck**

Crane	40T @ 3,75m 4T @ 21m
Anchor winches	frw/aft
Tugger Winch	3,75 T
Mooring winches/Four point	4 x 6T
Deck Cargo	50T
Deck space	10x11,5 Meter
Moonpool	ø 60 cm Hatch cover
A-Frame	30T + 15 T Winch
Spud leg	12 meter
Salvage Pump	1500 m3/hr
Aux Powersupply	400V 250 Ah

Normally carrying a wide specter of salvage equipment  
 Such as electrical and diesel driven salvage pumps welding  
 and cutting equipment, etc.  
 Details subject to change without warning.

### **Dimensions**

Length o.a	23,9m
Beam Extreme	11,5m
Depth to main deck	2,85m
Max Draught	2,0 m
Gross tonnage	213

### **Tank Capacities**

Fuel/oil	11m <sup>3</sup>
Fresh water	2m <sup>3</sup>
Freshwater/ballast	200 m <sup>3</sup>

### **Accommodation**

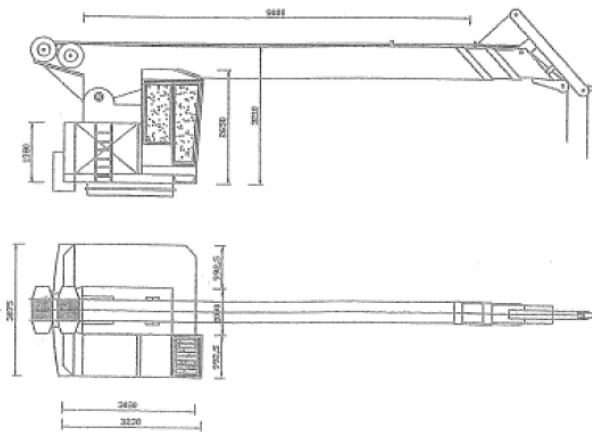
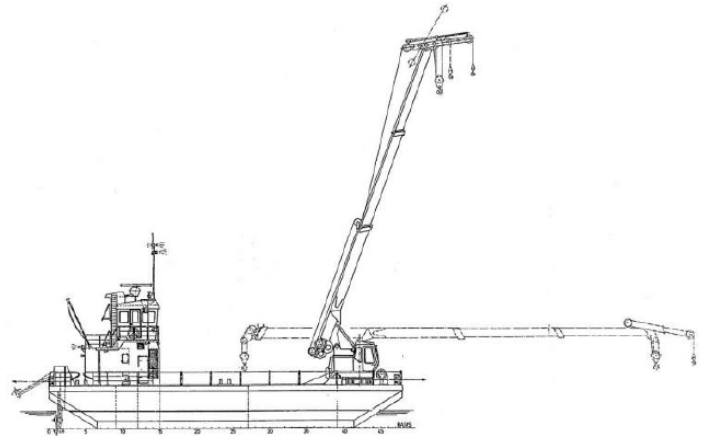
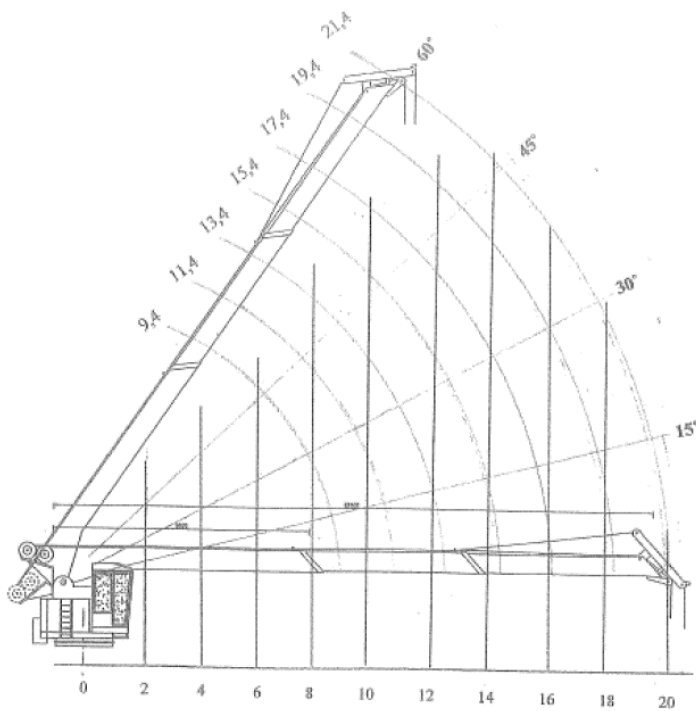
Four men Cabin	1 for 4
Total beds	4
Workshop	65m <sup>2</sup>

### **Other**

Workboats  
 Yokohama fenders

### **Bridge**

Communication equipment for A1  
 All modern navigation equipment according  
 to class



**Load chart 40 T Kenz West Crane FFS AMON**

Radius (m)	Arm Length						
	9,4	11,4	13,4	15,4	17,4	19,4	21,4
2	40	20	20	16	14	12	10
3	40	20	20	16	14	12	10
3,75	40	20	20	16	14	12	10
4	36,9	20	20	16	14	12	10
5	30	20	20	14,9	13,4	11,8	10
6	24,2	20	17	13,8	12,7	11,3	9,3
7	20	16,9	15,1	12,6	11,8	10,6	8,5
8	16,8	14,8	13,5	11,3	10,7	9,8	7,5
9		13,2	12,1	10,1	9,6	8,9	6,9
10		11,8	10,7	9,3	8,5	7,8	6,4
11			9,5	8,5	7,6	6,5	5,9
12			8,4	7,8	6,8	6	5,5
13				7,2	6,2	5,6	5,1
14				6	5,8	5,3	4,9
15					5,6	5	4,8
16					5	4,8	4,6
17						4,6	4,5
18						4,5	4,3
19							4,2
20							4